

Research Paper

## Studying and Identifying the Social, Economic and Cultural Dimensions of Waqf in Education from the Perspective of Secondary School Principals in the Second Year of Jiroft City

Samira Amiri Dumiri\*

\* Faculty of educational science and psychology, Education Management, Islamic Azad University, Rafsanjan, Kerman, Iran.

### ARTICLE INFO

#### Keywords:

Social, Economic, Cultural, Dimensions, Waqf, Secondary School, Principals, Jiroft



#### Received Date:

3<sup>rd</sup> September 2023

Received in revised form:

4<sup>th</sup> October 2023

#### Accepted Date:

28 February 2024

#### Publish Date

22 May 2024

pp.66-77

### ABSTRACT

**Introduction:** This study investigates and identifies the social, economic, and cultural dimensions of endowment (waqf) in education from the perspective of secondary school managers in Jiroft County. As a traditional Islamic institution, endowment can have extensive impacts on various social, economic, and cultural aspects of society. This research aims to provide a comprehensive understanding of these impacts in the field of education by examining the opinions of educational administrators.

**Methodology:** The research is qualitative and exploratory, utilizing purposive sampling with ordinary cases. The study's population consisted of all secondary school managers in Jiroft County, with a sample size of 10 participants reached through theoretical saturation. Data were collected using semi-structured interviews, with questions designed based on the research topic. Thematic coding, including open coding, axial coding, and selective coding, was used for data analysis.

**Findings:** The findings highlight several dimensions of endowment in education. Socially, endowment contributes to reducing class disparities and achieving educational and social justice, enhances social welfare and cooperation, supports and assists the needy, prevents social corruption and disorder, strengthens social bonds, promotes reciprocal social responsibilities, and aids in creating and supporting social institutions. Economically, endowment improves income and productivity, fosters economic empowerment and independence, advances production and poverty alleviation, prevents economic discrimination, revives jobs and creates employment opportunities, and supports progress in industry, agriculture, and animal husbandry. Culturally, endowment promotes cultural flourishing and empowerment, supports educational expansion and library establishment, enhances knowledge and awareness, advances moral development, fosters empathy and cooperation, aids in the dissemination of Islam, and encourages internal purification and the development of positive human traits.

**Conclusion:** The study provides insights into the various social, economic, and cultural dimensions of endowment within the educational system in Jiroft County. The results indicate that endowment can significantly contribute to reducing social inequalities, enhancing economic independence, and advancing cultural development. These impacts specifically improve educational quality, create job opportunities, and strengthen social and cultural cohesion. The findings offer valuable guidance for educational managers and policymakers in utilizing endowment to enhance the education system.

**Citation** Amiri Dumiri, S. (2024). Studying and Identifying the Social, Economic and Cultural Dimensions of Waqf in Education from the Perspective of Secondary School Principals in the Second Year of Jiroft City. *The New Approaches in Humanities*, 1(3), 66-77.

 <http://NAHQ/NAHQ.2024.204358>

\* Corresponding author (Email: [Atosa.amiri.d@gmail.com](mailto:Atosa.amiri.d@gmail.com))

Copyright © 2023 The Authors. Published by Alim-e-Nour Publication. This is an open access article.

---

## Introduction

Waqf, as one of the virtuous Islamic traditions, has extensive social, economic, and cultural impacts on Islamic societies. This practice, symbolizing benevolence and social cooperation, has historically fostered altruism and support for the needy. In waqf, the dimensions of self-love and altruism emerge, as dedicating part of one's assets to charitable purposes ensures the perpetuation of the donor's name and wealth (Fallah et al., 2020; Afzalkhani & Alipour, 2020).

Economically, waqf (endowment) plays a vital role in reducing inequalities, promoting justice and moderation, and enhancing productivity. Through sustainable financial resources, it has supported the establishment and maintenance of educational, healthcare, and welfare institutions while preventing wealth monopolization. Islam, through mechanisms such as khums, zakat, and waqf, encourages the wealthy to assist the needy, thereby narrowing the socioeconomic gap (Fallah Tafti & Akbarnejad, 2015).

In the cultural and educational sphere, waqf has been a stable source for founding schools, libraries, and scientific institutions. Many prominent Islamic scholars have achieved academic excellence with the help of waqf revenues. Waqf has also played a significant role in developing Islamic culture and spreading Islamic teachings by funding the construction of mosques, organizing religious ceremonies, and enhancing educational systems (Mohammadkhani et al., 2020). Moreover, waqf exemplifies one of the humanistic dimensions of Islamic civilization, namely social solidarity, which is unparalleled in other religions. This institution utilizes private financial resources to address societal issues that cannot be resolved solely through governmental assistance (Salehi Abraghouei & Alimohammadi, 2018).

Despite its valuable historical background, the multifaceted roles of waqf, particularly its social and cultural impacts, remain underexplored. In development planning, leveraging the potential resources of waqf can significantly contribute to meeting financial needs (Janati, 2014).

Western countries, after encountering Islamic civilization, adopted certain principles of waqf; however, their focus has been primarily on worldly benefits. A notable example is the "John D. Rockefeller" waqf in the United States (Motalebi, 2020).

Afzal Khani and Alipour (2020) analyzed the content of social studies and Heavenly Gifts textbooks for the 2017-2018 academic year in elementary schools to assess the extent of attention to and groundwork for cultivating a culture of waqf (endowment). Using a quantitative content analysis method, the study examined all texts, images, class activities, and questions in the textbooks, employing a comprehensive census sampling approach due to the limited population. The research tool was a content analysis checklist with four components (waqf, charity, gifts, and vows) and three dimensions (skills, cognition, and emotion). The findings indicated that among the analyzed content, 39.4% referred to charity, 56.3% to gifts, and 4.3% to vows, distributed across skill-based (19.7%), emotional (33.8%), and cognitive (46.5%) domains. However, references to waqf were notably absent, underscoring its minimal presence in these educational materials.

Fallah et al. (2020) investigated the impact of waqf on government size in the economy. This applied and descriptive-survey research employed thematic analysis for qualitative data from interviews and prior studies, along with structural equation modeling (SEM) and AMOS software for analyzing questionnaire data. The study sample included 18 experts for interviews and 62 respondents for questionnaires, selected using purposeful and convenience sampling. With a Cronbach's alpha of 0.812, the questionnaire was deemed reliable. The findings highlighted the necessity of addressing educational and cultural factors as accelerators for waqf and incorporating social entrepreneurship as a mediating factor in reducing government size.

Matlabi (2020) examined donors' behavioral motivations for waqf using frameworks from conventional economics, psychology, and behavioral economics to facilitate the qualitative and quantitative expansion of waqf management.

---

Employing a descriptive-analytical approach, the study identified divine and afterlife-oriented incentives as primary motivators. Behavioral motivations also stemmed from physiological, security, belonging, respect, and self-actualization needs, reflecting humans' psychological and social imperatives. From an economic perspective, waqf behaviors align with self-interest in conventional economics and are explained in behavioral economics through altruism, fairness, and ethical preferences.

Taheri and Heidari (2018) explored the feasibility, necessity, and benefits of promoting philanthropic activities to support science and technology institutions, focusing on waqf. Through historical analysis and examples of successful global models, the study concluded that directing philanthropic efforts toward advancing science and technology—especially in fostering startups and knowledge-based enterprises—could generate significant societal value. The study emphasized the role of cultural promotion in encouraging public and philanthropic participation.

Safaei Pour et al. (2014) examined the influence of waqf on the economic development of Ahvaz city. This research highlighted waqf's role in addressing economic and social challenges, such as poverty alleviation and welfare enhancement. Using Cochran's formula, a sample of 320 participants was surveyed, and ArcGIS software was employed for mapping, while SPSS was used for statistical analysis. Findings showed a significant rise in waqf income from 1,750 million rials in 2011 to 5,480 million rials in 2013, underscoring its economic impact. Indicators such as employment, social justice, security, government services, cash flow, and capital formation were analyzed. Results revealed waqf's significant contributions, particularly in capital formation and social security in Ahvaz's first district, while economic security and cash flow were less impacted.

These studies collectively highlight waqf's multifaceted roles across educational, cultural, economic, and social dimensions, offering valuable insights for enhancing its implementation and impact. This study aims to examine the social, economic, and cultural dimensions of waqf in education from the

---

perspective of secondary school administrators in Jiroft County. It seeks to identify the impacts and potentials of this tradition in improving the education system.

### **Methodology:**

This exploratory qualitative study employed semi-structured interviews as its primary data collection method. Interviews, being a robust tool in qualitative research, facilitate direct interaction with participants, enabling deeper exploration of their perceptions, attitudes, interests, and aspirations. This approach allows the researcher to examine complex issues, follow up on responses, and ensure the participants' understanding of the questions. The target population comprised secondary school principals in Jiroft city. Purposeful and convenience sampling were employed, and data collection continued until theoretical saturation was achieved—when additional sampling yielded no significant new insights regarding the studied phenomenon. Data were gathered through two primary methods:

- **Library Research:** The researcher reviewed literature, books, and academic theses relevant to the study topic to establish a theoretical foundation.
- **Semi-structured Interviews:** Customized questions were designed to align with the research objectives. These were administered to the study's participants during interviews to measure research variables effectively. In qualitative research, reliability (trustworthiness) and validity (credibility) are achieved through systematic techniques.

To enhance the trustworthiness of this study, four key measures were applied:

- **Credibility:** Equivalent to validity in quantitative research, credibility was ensured through sufficient interaction with participants, member checks (participants reviewing their responses), and expert consultation.
- **Dependability:** Stability was maintained by having experienced consultants review the process and results.
- **Confirmability:** The researcher minimized bias by avoiding personal assumptions during data collection and analysis. Feedback from

participants was integrated to ensure impartiality.

- **Transferability:** Findings were contextualized to ensure their applicability within similar frameworks. The study explored the social, economic, and cultural dimensions of waqf (endowment) in education from the perspectives of secondary school principals in Jiroft.

Interview data were analyzed using systematic coding procedures:

- **Open Coding:** Initial identification of themes and concepts.
- **Axial Coding:** Connecting related themes to form coherent categories.
- **Selective Coding:** Refining the core themes to address research questions comprehensively.

This rigorous coding process allowed the researcher to identify and interpret latent themes in participants' narratives, aligning them with the study's objectives. Ultimately, the thematic coding framework facilitated a nuanced understanding of waqf's impact on education. Based on the research methodology outlined above, purposive and convenience sampling methods were employed. Sampling continued until theoretical saturation was achieved regarding the concept under study. The statistical population for this research included all secondary school principals in Jiroft city. The sample consisted of 10 volunteer principals from secondary schools in Jiroft who participated in the study. Each interview lasted approximately 90 minutes. Data collection was conducted partly through in-person interviews and continued until theoretical saturation was reached. Subsequently, data coding was performed in three stages—open coding, axial coding, and selective coding—until saturation was achieved.

## **Results:**

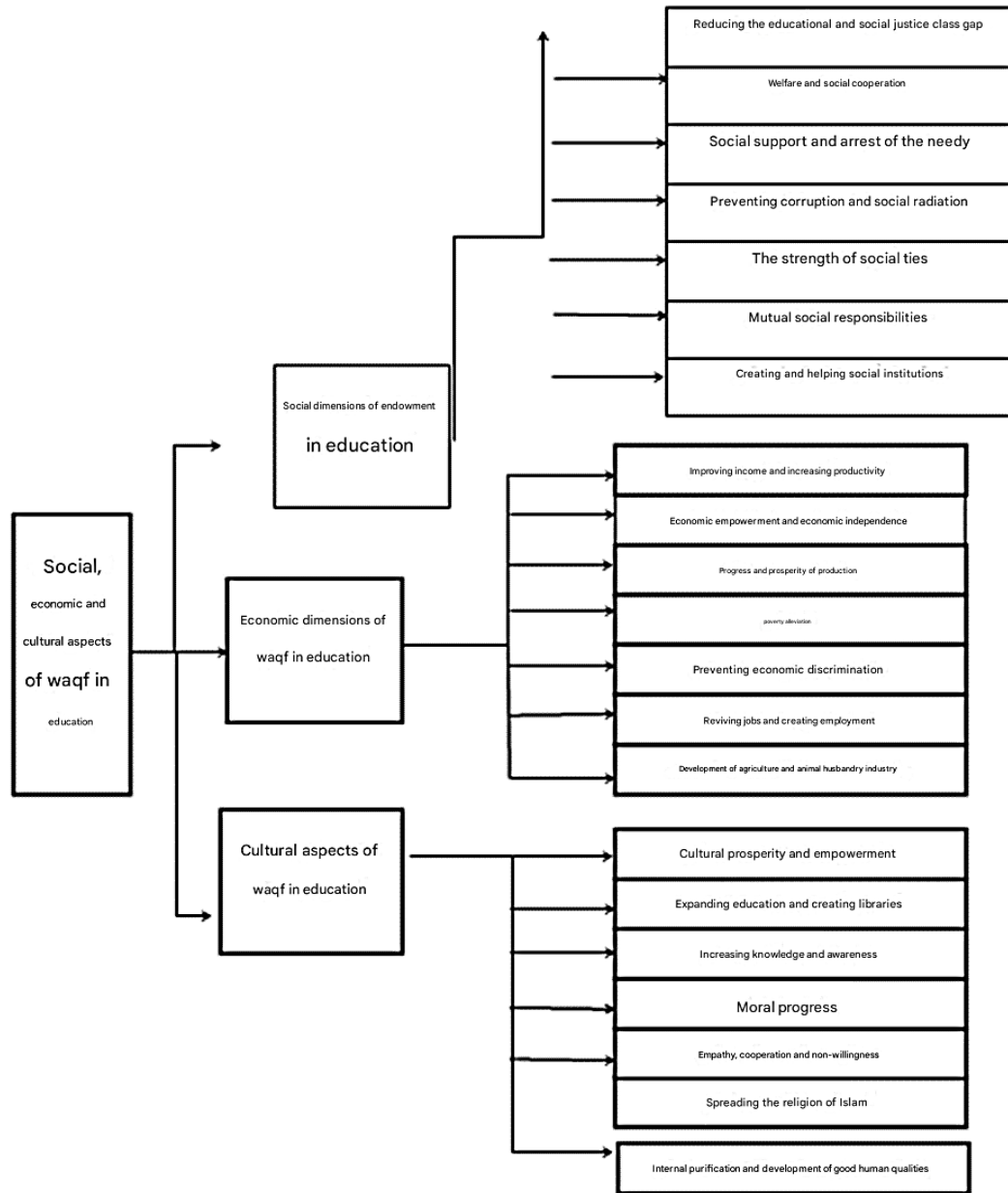
The results of the study began with open coding of the interviews conducted with secondary school principals. These codes were then categorized to address the research questions. Ultimately, the social dimensions of endowment in education were selectively coded into seven categories: (1) reducing class disparities,

---

educational and social justice, (2) social welfare and cooperation, (3) social support and assisting the needy, (4) preventing corruption and social disarray, (5) strengthening social bonds, (6) mutual social responsibilities, and (7) establishing and supporting social institutions.

The economic dimensions of endowment in education were also selectively coded into seven categories: (1) increasing income and productivity, (2) economic empowerment and independence, (3) advancement and promotion of production, (4) poverty alleviation, (5) preventing economic discrimination, (6) reviving professions and creating employment, and (7) progress in industry, agriculture, and livestock.

Finally, the cultural dimensions of endowment in education were categorized into seven groups through selective coding: (1) cultural flourishing and empowerment, (2) expanding education and establishing libraries, (3) enhancing knowledge and awareness, (4) moral advancement, (5) fostering empathy, cooperation, and altruism, (6) promoting and spreading Islam, and (7) inner purification and cultivating positive human traits. These dimensions—social, economic, and cultural—were identified as critical aspects of endowment in education.



**Figure 1.** graphical representation of the three main dimensions—Social, Economic, and Cultural Endowment—along with their components

---

## **Discussion and Conclusion:**

The social, economic, and cultural dimensions of endowment in education can have the following outcomes and conclusion

### **Social Dimension:**

- Endowment strengthens social bonds, promotes harmony, and fosters empathy.
- It supports the creation of welfare institutions and improves urban and rural areas.
- Endowment helps reduce social inequality and nurtures self-belief, contributing to societal well-being.

### **Economic Dimension:**

- Endowment creates jobs, supports agriculture, industry, and health sectors.
- It contributes to technological and research development, boosts tourism, and promotes economic growth.
- It reduces unemployment, increases productivity, and supports trade, helping achieve national economic goals.

### **Cultural Dimension:**

- Endowment introduces religion in its best form, promotes virtues like sacrifice and forgiveness, and enhances the understanding of Islam globally.
- It aids the preservation of cultural heritage, supports education, art, and the development of cultural institutions.
- Endowment plays a significant role in organizing conferences, publishing journals, and preserving religious sites, while contributing to the development of schools, hospitals, and mosques.

---

In conclusion, endowment plays a significant role in education, impacting social, economic, and cultural dimensions. Socially, it strengthens community bonds, reduces inequality, and fosters empathy. Economically, it boosts productivity, creates jobs, and supports key sectors like agriculture, health, and tourism. Culturally, endowment promotes religious values, preserves heritage, and supports education and the arts. Overall, endowment contributes to societal development, enhancing both individual and community well-being across various sectors.

The multifaceted impact of endowment on education has been explored through social, economic, and cultural lenses. Socially, endowment fosters stronger community ties and addresses inequalities by supporting marginalized groups. Economically, it stimulates growth by funding key sectors like agriculture, industry, and healthcare, which in turn contributes to national prosperity. Culturally, endowment enhances religious values, cultural heritage, and educational development. The findings suggest that endowment is a powerful tool for societal advancement, promoting a balanced and sustainable development across these vital dimensions. Further research could explore how to optimize its use for maximum impact.

The analysis of the role of endowment (waqf) across social, economic, and cultural dimensions highlights its profound and multifaceted impact on society. From a social perspective, endowment fosters the strengthening of social bonds, enhances solidarity, and contributes to the development of communities by supporting welfare programs. It serves as a vital tool for reducing class disparities, promoting equality, and instilling a sense of community responsibility. Furthermore, it helps alleviate societal pain and suffering by offering support to those in need.

Economically, endowment plays a crucial role in promoting development by providing resources for various sectors, including agriculture, industry, healthcare, and research. It generates job opportunities, fosters innovation, and boosts national productivity. Endowment contributes to the financial sustainability of the country

---

by ensuring resources are allocated to important developmental projects, including infrastructure and social services. In addition, it helps reduce unemployment rates and supports the growth of the tourism industry through historical and cultural endowments.

Culturally, endowment has a significant impact on promoting values such as charity, generosity, and selflessness. It aids in the preservation of cultural heritage, supports the development of religious institutions, and promotes education through the establishment of schools and libraries. Endowment also enhances the dissemination of Islamic teachings and fosters a greater understanding of social responsibility and ethical conduct. Moreover, it supports the publication of educational materials, and provides funds for conferences and research initiatives.

In conclusion, endowment serves as a dynamic mechanism for addressing societal needs, improving economic conditions, and advancing cultural values. Its potential to shape positive change and contribute to sustainable development across various sectors underscores its importance as a tool for societal progress. The continuation of research and initiatives related to waqf will ensure its effective utilization and the expansion of its benefits for future generations.

---

## References:

- Afzal Khani, M., & Alipour, V. (2021). Content analysis of the social studies and *Heedayeh-ye Aaseman* curriculum in primary school from the perspective of the concept of endowment. *Psychology and Educational Sciences Studies*, 58, 19–30.
- Falah, M. R., Jafari, M., & Ebadi, R. (2020). Presenting a model for investigating and explaining the role of endowment on government size in the economy, with an emphasis on the role of social entrepreneurship. *Majles and Strategy*, 104, 5–30.
- Falah Tafti, S., & Akbarnajad, M. (2015). Educational and developmental functions of endowment. *Second International Conference on Behavioral Sciences and Social Studies*.
- Janati, A. (2015). An investigation of the economic function of endowment in the Islamic government. *Journal of Money and Economics*.
- Matlabi, S. M. M. (2020). Behavioral analysis of endowment (psychology, economics). *Islamic Social Research*, 122, 101–136.
- Mohammad Khani, K., Sham Mohammadi, M., Ghodrati, G., & Salehi Amiri, S. R. (2020). Effective factors in the development of the culture of endowment: A structural equation model approach. *Cultural Management*, 50, 1–20.
- Salahi Abrugouei, M. A., & Alimohamadi, A. (2018). Identifying and prioritizing factors influencing the inclination of philanthropists and endowers to financially support defense and security research in the country. *Defense Economics*, 3(7), 53–78.
- Safaiepour, M., Siahi, Z., Zarghari Shushtari, M. A., & Dary Pour, N. (2014). Investigating the impact of endowment on the economic development of Ahvaz city: A case study of district one. *Urban Research and Planning*, 5(16).
- Taheri Damneh, M., & Heydari Darani, Z. (2018). A reflection on the role and position of endowment and philanthropy in science and technology. *Science and Technology Policy Journal*, 22, 39–48.